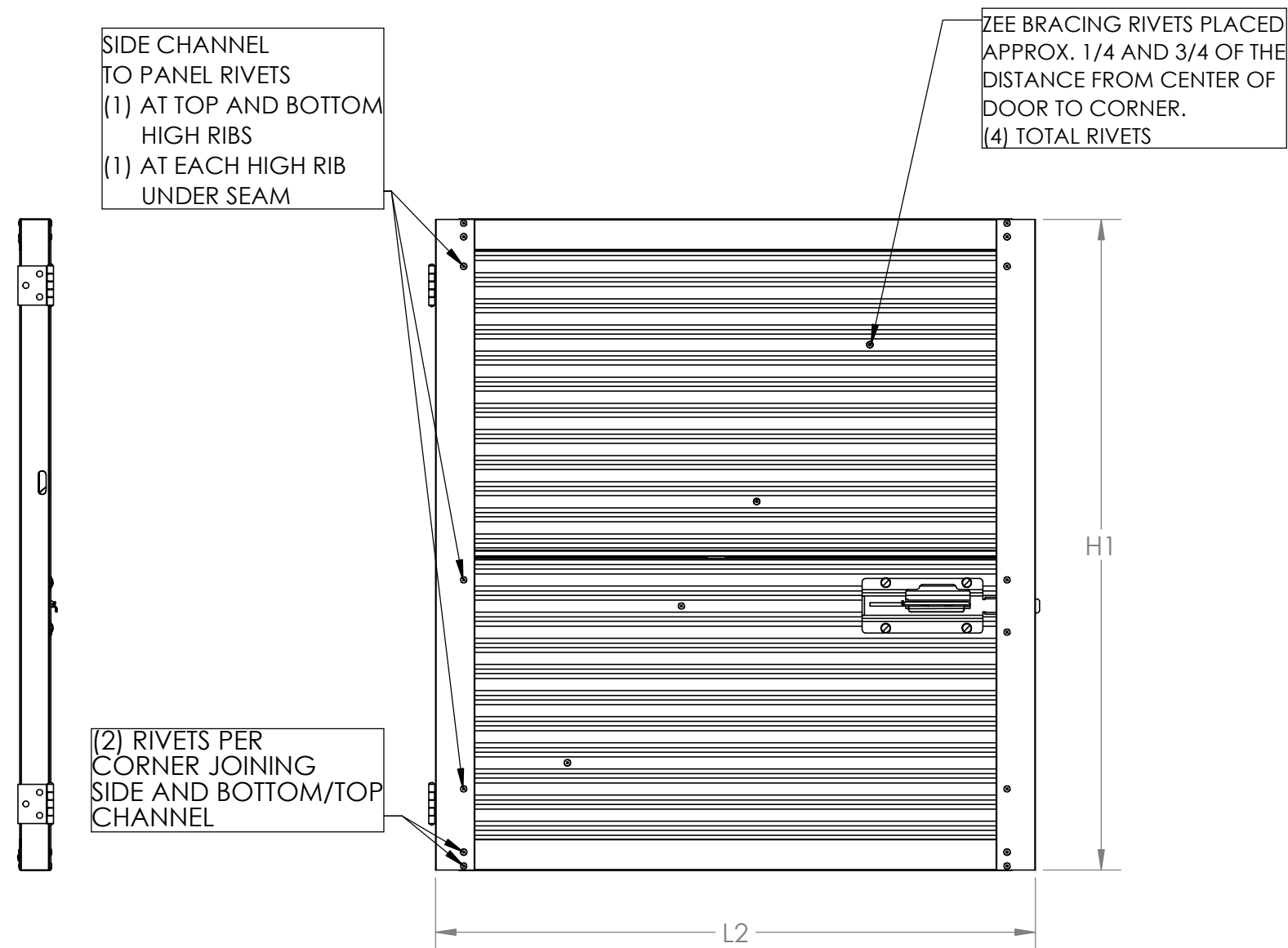
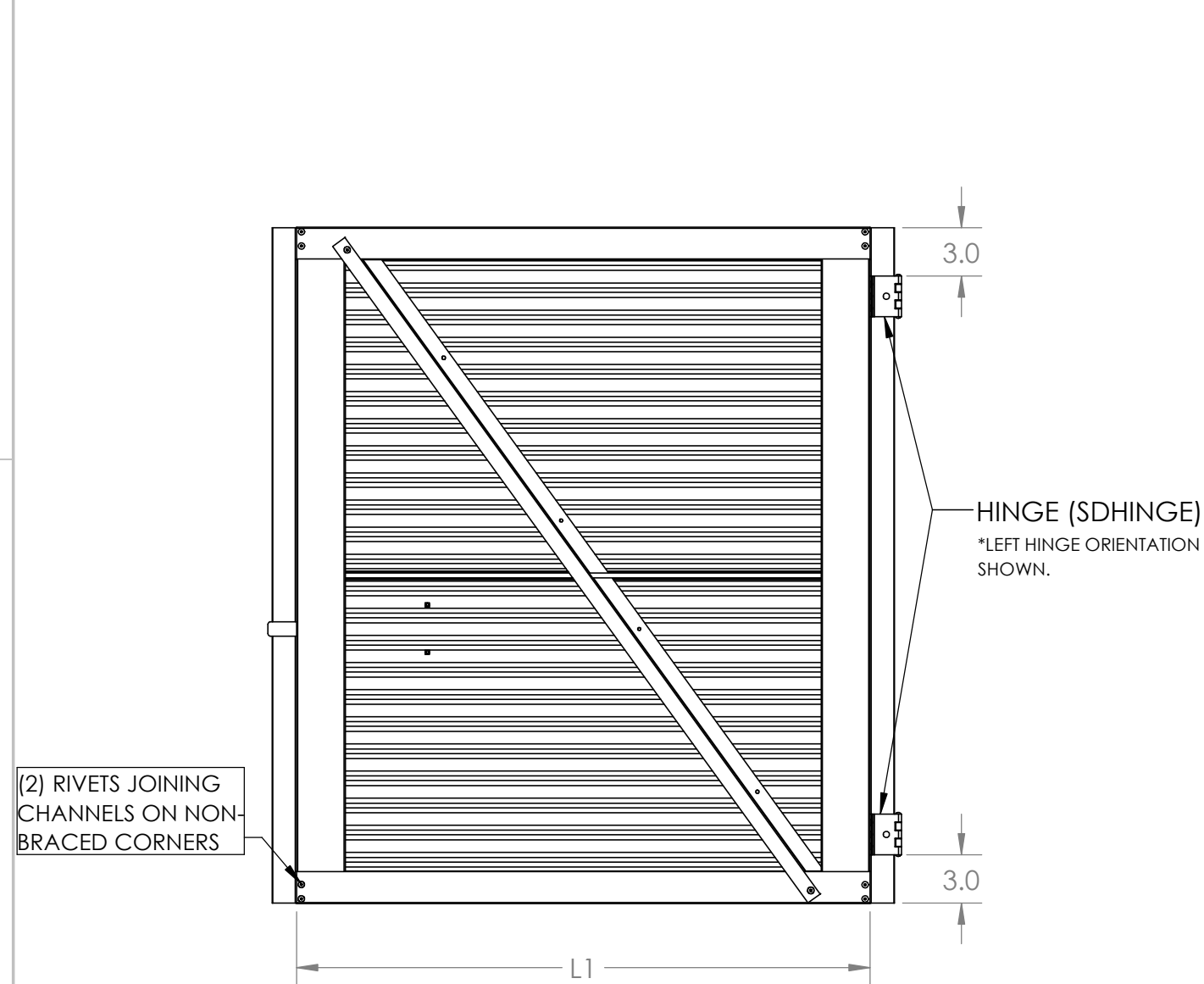


DOOR OPENING WIDTH (YYY")	L1	L2
3'-0" (36")	35.25"	38.25"
3'-6" (42")	41.25"	44.25"
4'-0" (48")	47.25"	50.25"
YYY"	YYY - 0.75"	L1 + 3"

DOOR OPENING HEIGHT (XXX")	H1
3'-0" (36")	35.50"
3'-6" (42")	41.50"
4'-0" (48")	47.50"
XXX"	XXX - 0.50"



								PART NUMBER:	LD		REV:	P1
 CENTRAL STATES[®] MANUFACTURING, INC. <small>METAL BUILDING COMPONENTS</small>	PROPRIETARY AND CONFIDENTIAL	UNLESS OTHERWISE SPECIFIED:		MATERIAL:	FINISH:		NAME	DATE	DESCRIPTION: STANDARD LOCKER DOOR			
	THE INFORMATION CONTAINED IN THIS DRAWING IS THE SOLE PROPERTY OF CENTRAL STATES MANUFACTURING INC.. ANY REPRODUCTION IN PART OR AS A WHOLE WITHOUT THE WRITTEN PERMISSION OF CENTRAL STATES MANUFACTURING INC. IS PROHIBITED.	DIMENSIONS ARE IN INCHES	INTERPRET TOLERANCING PER: ASME Y14.5	VARIES	VARIES							
		STANDARD DECIMAL TOLERANCES:				DRAWN	K.WATSON	05/28/2025				
		X.X ±0.125				CHECKED						
		X.XX ±0.060				ENG APPR.	K.WATSON	05/28/2025				
		X.XXX ±0.030										
ANGULAR: ±2°				DO NOT SCALE DRAWING	SCALE: 1:1	SHEET 1 OF 4						

4

3

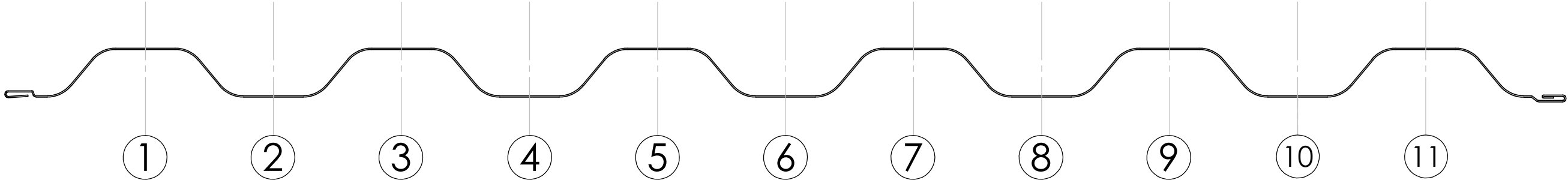
2

1

NOMINAL DOOR HEIGHT	CUT LOCATION	NOMINAL DOOR HEIGHT	CUT LOCATION
2'-0" (24")	2	3'-6" (42")	No cut, 2 full panels
2'-1" (25")	2	3'-7" (43")	1
2'-2" (26")	3	3'-8" (44")	2
2'-3" (27")	3	3'-9" (45")	2
2'-4" (28")	4	3'-10" (46")	3
2'-5" (29")	5	3'-11" (47")	3
2'-6" (30")	5	4'-0" (48")	4
2'-7" (31")	6		
2'-8" (32")	6		
2'-9" (33")	7		
2'-10" (34")	8		
2'-11" (35")	8		
3'-0" (36")	9		
3'-1" (37")	9		
3'-2" (38")	10		
3'-3" (39")	11		
3'-4" (40")	11		
3'-5" (41")	No cut, 2 full panels		

SINGLE HEM
(MALE) SIDE

DOUBLE HEM
(FEMALE) SIDE



PANEL CUT LOCATIONS



PROPRIETARY AND CONFIDENTIAL
THE INFORMATION CONTAINED IN THIS DRAWING IS THE SOLE PROPERTY OF CENTRAL STATES MANUFACTURING INC. ANY REPRODUCTION IN PART OR AS A WHOLE WITHOUT THE WRITTEN PERMISSION OF CENTRAL STATES MANUFACTURING INC. IS PROHIBITED.

UNLESS OTHERWISE SPECIFIED:
DIMENSIONS ARE IN INCHES
STANDARD DECIMAL TOLERANCES:
X.X ±0.125
X.XX ±0.060
X.XXX ±0.030
ANGULAR: ±2°
INTERPRET TOLERANCING PER: ASME Y14.5

MATERIAL:

FINISH:

	NAME	DATE
DRAWN	K.WATSON	05/27/2025
CHECKED		
ENG APPR.	K.WATSON	05/27/2025

PART NUMBER:
LD-CUT LOCATIONS

REV:
P1

DESCRIPTION:
CUT LOCATIONS FOR PARTIAL TOP PANELS FOR LOCKER DOORS

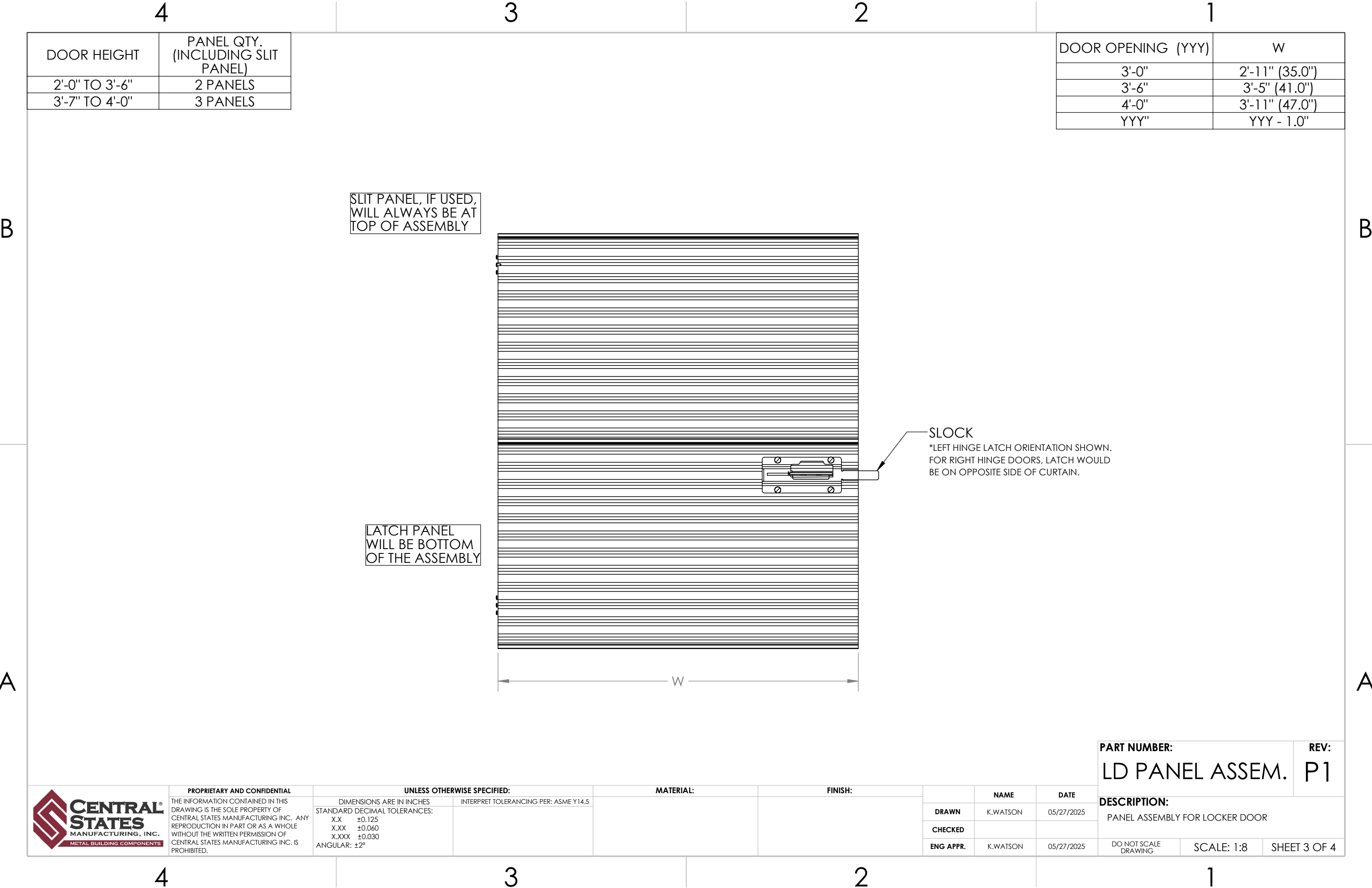
DO NOT SCALE DRAWING SCALE: 1:1.5 SHEET 2 OF 4

4

3

2

1



DOOR HEIGHT	PANEL QTY. (INCLUDING SLIT PANEL)
2'-0" TO 3'-6"	2 PANELS
3'-7" TO 4'-0"	3 PANELS

DOOR OPENING (YYY)	W
3'-0"	2'-11" (35.0")
3'-6"	3'-5" (41.0")
4'-0"	3'-11" (47.0")
YYY"	YYY - 1.0"

SLIT PANEL, IF USED,
WILL ALWAYS BE AT
TOP OF ASSEMBLY

LATCH PANEL
WILL BE BOTTOM
OF THE ASSEMBLY

SLOCK
*LEFT HINGE LATCH ORIENTATION SHOWN.
FOR RIGHT HINGE DOORS, LATCH WOULD
BE ON OPPOSITE SIDE OF CURTAIN.



PROPRIETARY AND CONFIDENTIAL
THE INFORMATION CONTAINED IN THIS
DRAWING IS THE SOLE PROPERTY OF
CENTRAL STATES MANUFACTURING INC. ANY
REPRODUCTION IN PART OR AS A WHOLE
WITHOUT THE WRITTEN PERMISSION OF
CENTRAL STATES MANUFACTURING INC. IS
PROHIBITED.

UNLESS OTHERWISE SPECIFIED:		
DIMENSIONS ARE IN INCHES		INTERPRET TOLERANCING PER: ASME Y14.5
STANDARD DECIMAL TOLERANCES:		
X.X	±0.125	
X.XX	±0.060	
X.XXX	±0.030	
ANGULAR: ±2°		

	NAME	DATE
DRAWN	K.WATSON	05/27/2025
CHECKED		
ENG APPR.	K.WATSON	05/27/2025

PART NUMBER:		REV:
LD PANEL ASSEM.		P1
DESCRIPTION:		
PANEL ASSEMBLY FOR LOCKER DOOR		
DO NOT SCALE DRAWING	SCALE: 1:8	SHEET 3 OF 4

4

3

2

1

(3) RIVETS PER CORNER
WITH BRACING

(2) RIVETS PER
NON-BRACED CORNER

(2) RIVETS PER CORNER

TOP CHANNEL (SDTC)

SIDE CHANNEL (SDSC)

ZEE BRACING
(SDBR)

SIDE CHANNEL

TOP CHANNEL

BACK VIEW

FRONT VIEW



PROPRIETARY AND CONFIDENTIAL
THE INFORMATION CONTAINED IN THIS
DRAWING IS THE SOLE PROPERTY OF
CENTRAL STATES MANUFACTURING INC. ANY
REPRODUCTION IN PART OR AS A WHOLE
WITHOUT THE WRITTEN PERMISSION OF
CENTRAL STATES MANUFACTURING INC. IS
PROHIBITED.

UNLESS OTHERWISE SPECIFIED:	
DIMENSIONS ARE IN INCHES	INTERPRET TOLERANCING PER: ASME Y14.5
STANDARD DECIMAL TOLERANCES:	
X.X	±0.125
X.XX	±0.060
X.XXX	±0.030
ANGULAR:	±2°

MATERIAL:

FINISH:

	NAME	DATE
DRAWN	K.WATSON	05/28/2025
CHECKED		
ENG APPR.	K.WATSON	05/28/2025

PART NUMBER:		REV:
LD FRAMING ASSEM.		P1
DESCRIPTION:		
LOCKER DOOR FRAMING ASSEMBLY		
DO NOT SCALE DRAWING	SCALE: 1:8	SHEET 4 OF 4

4

3

2

1