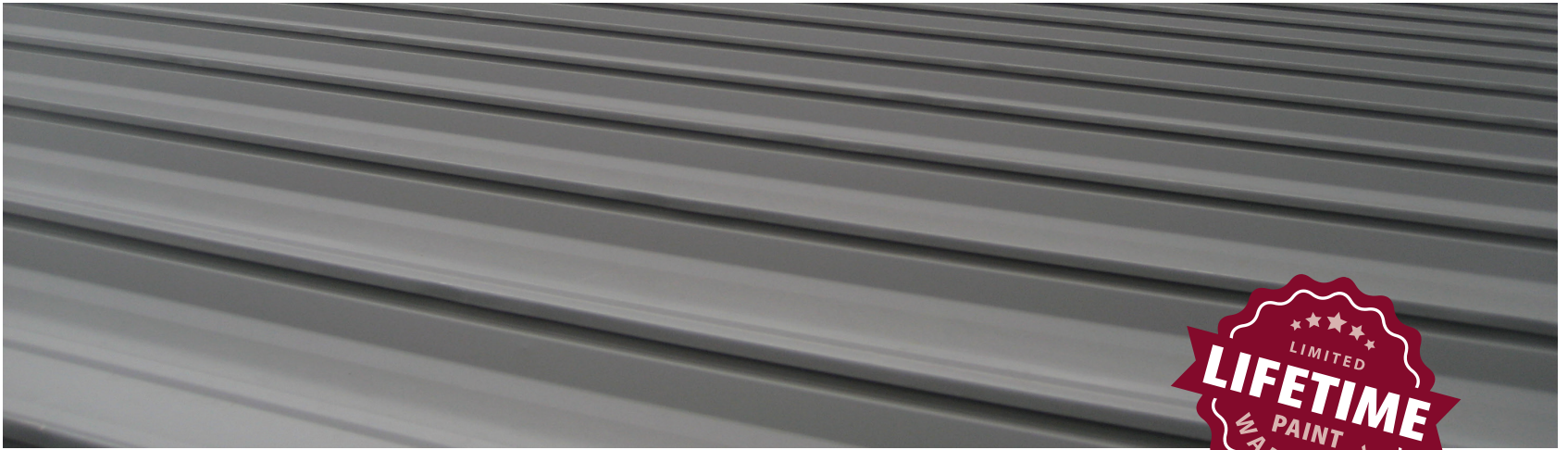


Central Seam Plus®

Standing Seam Roof Panel



Ideal for *commercial* and *industrial* applications

Central Seam Plus is perfect for economical commercial and industrial applications that need the extra strength and durability of a mechanically-seamed roof.

Pre-punched panels are available and self-engaging backup plates allow for easier installation.

- Factory applied sealant ensures a weather-tight and secure lap.
- Floating clips allow for thermal roof expansion and contraction during extreme temperature changes.
- Add DripX for condensation control and vapor barrier elimination.



RECOMMENDED
1/4:12
PITCH
AND ABOVE

24
GAUGE

18"
OR **24"**
OVERALL
COVERAGE

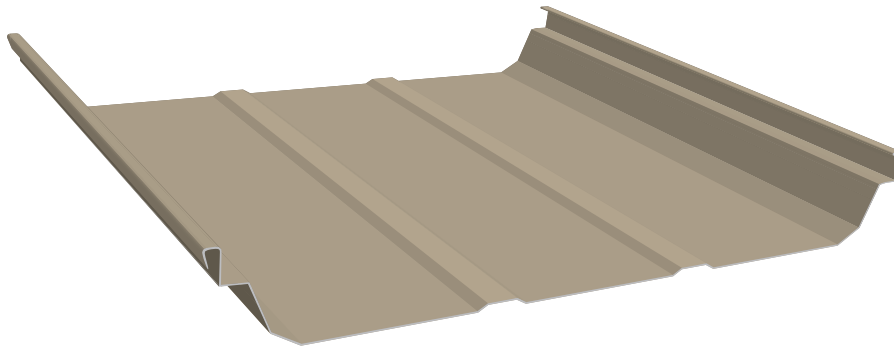
3"
MAXIMUM
RIB HEIGHT



CENTRALSTATESCO.COM

Copyright © 2024, Central States Manufacturing, Inc., All Rights Reserved.
Galvalume® is a registered trademark of BIEC International, Inc.

FLYR_CentralSeamPlus_240412



Choose an energy efficient finish.

Solar Reflectivity is the metal panel's ability to reflect sunlight. This characteristic of metal roofing is the most important in terms of energy savings. Cool metal roofing reflects much of the sun's rays, making the surface of the metal much cooler than material with a lower solar reflectivity rating.

Emissivity is the metal panel's ability to release absorbed heat. A low emissivity rating means the material will be hot to the touch (it doesn't release the heat), while material with a higher emissivity rating will be cooler to the touch. Therefore, metal with a low emissivity rating retains heat and may be more desirable for a cooler climate, while a high emissivity rating reflects heat and is more effective for saving energy in a warmer climate.

COLOR	INITIAL SOLAR REFLECTIVITY	INITIAL EMISSIVITY
Ash	0.32	0.83
Autumn	0.21	0.87
Brite	0.55	0.83
Bronze	0.25	0.83
Dark Bronze	0.25	0.83
Evergreen	0.27	0.85
Galvalume® (Acrylic Coated)	0.77	0.08
Sand	0.35	0.75
Slate Gray	0.18	0.87
Smoke	0.25	0.83
Terratone	0.32	0.83
Tudor	0.29	0.88
Verdigris	0.32	0.83

Solar reflectance values are determined by means of a solar spectrum reflectometer in accordance with ASTM C 1549. Thermal emittance values are determined in accordance with ASTM C 1371. Laboratory and Exposure site are ISO 17025 Accredited, Laboratory is also EPA Accredited. Panels are unwashed. Values are correct at time of printing. Ratings may change as paint technologies change. Check our website for details.

Find more information at
centralstatesco.com

MINIMUM SPECIFICATIONS FOR PRIME PAINTED PANELS

GAUGE
24 ga.

STEEL THICKNESS
0.023"

PAINT THICKNESS
 Top coat paint: .70 mil
 Top coat primer: .30 mil
 Bottom coat backer: .35 mil
 Bottom coat primer: .20 mil

TOTAL THICKNESS
0.02455"

RUST PROTECTANT SUBSTRATE
Galvalume® AZ50

STEEL STRENGTH
50,000 PSI min

PAINT SYSTEM
Flurinated Polymer (FEVE)

WARRANTY
 Lifetime limited paint adhesion
 30-yr. chalk and fade
 50-yr. Galvalume perforation

TESTING & APPROVALS

TESTING

- ASTM-E1592.1 Structural Test for Roof Systems, 24 ga.
- ASTM-E1680 Air Leakage Test Through Exterior Metal Roof Panel
- ASTM-E1646 Water Leakage Test of Exterior Metal Roof Panel
- FM4471 Foot Traffic Resistance Test

APPROVALS

- UL2218 UL Approval, Impact Resistance, Class 4
- UL580 UL Approval, Uplift Resistance, Class 90
- UL790 UL Approval, Fire Resistance, Class A
- FL14016 Florida Approval, 24 ga. Roof Panel Over Open Supports (NON-HVHZ)
- RC-448 Texas Windstorm Approval, 24 ga., With Wind Clamps, Over Steel Purlins
- RC-449 Texas Windstorm Approval, 24 ga. Over Steel Purlins